



Ivory | 2.5"x8"

# KENSINGTON



Gris Claro | 2.5"x8"

Made In **SPAIN**



Wayne Tile Company

[waynetile.com](http://waynetile.com)

# KENSINGTON

## CERAMIC TILE

### TECHNICAL DATA

Rectified	Yes
Water Absorption	>10%
Application	Interior
Thickness	9 MM
Finish	Glossy
Shade Variation	V1
Surface Abrasion Group	3



**Ash Blue | 2.5"x8"**

### LEAD TIME

In Stock/Quick Ship

### SIZES

2.5"x8"



2.5"x8" Bullnose

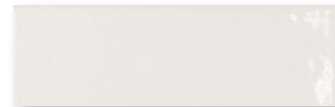
5"x16"

### COLORS

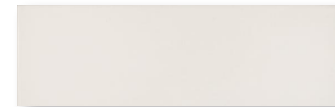
*Ash Blue*



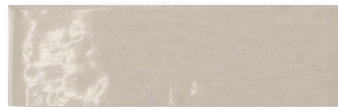
*Blanco Brillo*



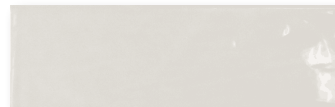
*Blanco Matte*



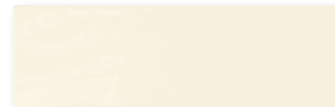
*Grey Pearl*



*Gris Claro*



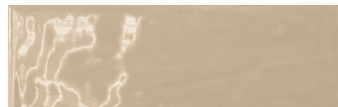
*Ivory*



*Mist Green*



*Vison*



### PACKING INFORMATION

Size	Finish	Thickness	SF per Box	SF per Pallet	Pieces per Box
2.5"x8"	Glossy*	9 MM	5.3808	645.6960	38
5"x16"	Glossy*	9 MM	10.7635	645.8340	38
2.5"x8" Bullnose	Glossy	9 MM	10.7635	645.8100	19

\* Blanco is available in both matte & glossy finishes.



Wayne Tile  
Company